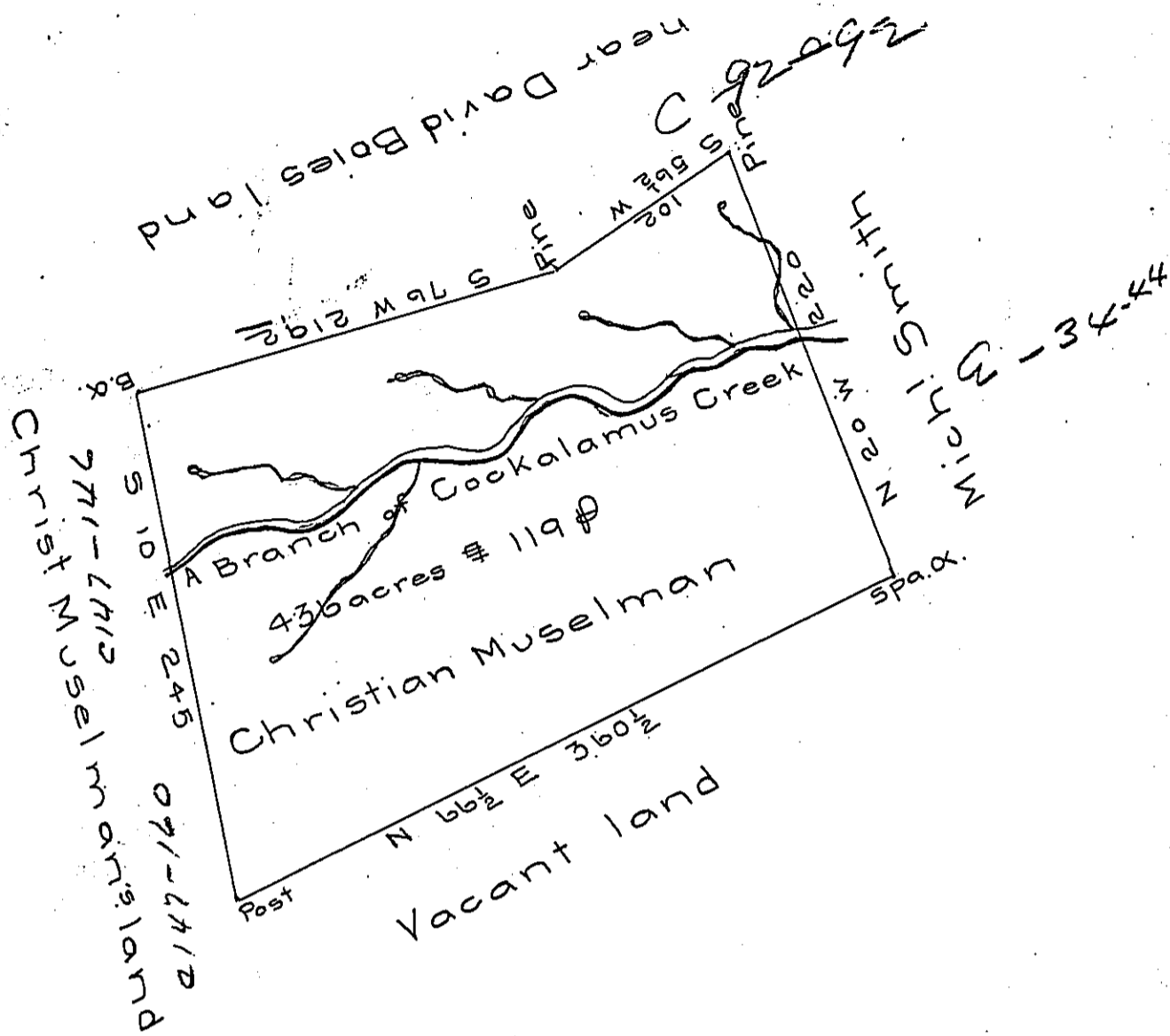


Courses & Distances

- N 20 W 220
- S 56½ W 102
- S 76 W 219
- S 10 E 245
- N 66½ E 360½



Now Mifflin CoY

The draught of a tract of land called — situate in Fermanagh township Cumberland County containing four hundred & thirty six & <sup>119¢</sup> ~~seven tenths~~ of an acre and allowance of six pr ct surveyed for Christian Muselman Nov: 5<sup>th</sup> 1785 in pursuance of a warrant from his Excellency the President of the Supreme executive Council dated at Philad<sup>a</sup> June 17<sup>th</sup> 1785.

¢ Sam! Lyon D.S.

To John Lukens Esqr }  
Surveyor General

*IN TESTIMONY* that the above is a copy of the original remaining on file in the Department of Internal Affairs of Pennsylvania, made conformably to an Act of Assembly approved the 16th day of February, 1833, I have hereunto set my Hand and caused the Seal of said Department to be affixed at Harrisburg, this seventh day of May 1906.

*Geo. R. Brown*  
Secretary of Internal Affairs.